

INTRODUCING THE CONNECTICUT ARTTRAIL

IPHONE APP WITH THE ALDRICH

CONTEMPORARY ART MUSEUM

Now it's easy to find your way to and around the fifteen museums and historic sites on the Connecticut Art Trail.*

Download the **FREE** Connecticut Art Trail mobile guide to explore what's in each museum and discover restaurants and lodging in the neighborhood. Each museum's individual guide offers location-specific points of interest within the museum, and automatically discovers what's in the neighborhood.

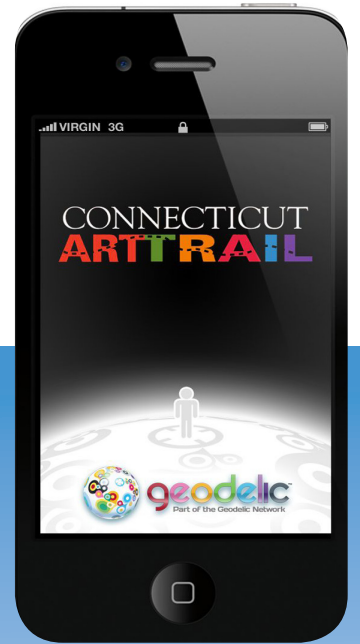
The mobile guide for each museum includes:

- Plan Your Visit (*hours, admission fees, parking, etc.*)
- Permanent Collections
- Special Exhibitions
- Gift Shop
- On-site café
- Gardens and Landscapes (on-site)
- Amenities (Restrooms, etc.)
- Calendar of Events
- Restaurants in the area
- Lodging in the area

* Mobile guides for Greenwich Historical Society and Weir Farm National Historic Site in Wilton will be phased-in in 2011. Blackberry platform will be launched 1st Quarter 2011.




Now, more than ever it's easy and fun to discover Connecticut's artistic treasures and the lively communities in which they reside.



If you have an iPhone:

1. Search for Connecticut Art Trail in the app store **ART**
2. Download!
3. Select the museum you wish to browse

If you have an Android:

1. Search for Geodelic in Android Marketplace 
2. Download!
3. Select the "Guides" button
4. Select the museum you wish to browse